

# SELF RETAINING SPACERS



## SRS/CBSS Series Snap In Standoff

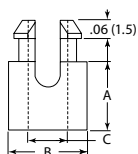


- Self-retaining and self-aligning
- Board mount head snaps in and maintains spacing even after the screw is removed

### Specifications:

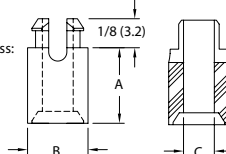
- Material: Nylon 6/6
- Color: Natural
- Flame Class: UL94 V-2

To Lock Hole:  
.187 (4.8)  
Panel Thickness:  
.047-.067 (1.2-1.7)  
For #4 (M3) Screw



Standard

To Lock Hole:  
.187 (4.7)  
Panel Thickness:  
.062 (1.57)  
For #4 (M3) Screw



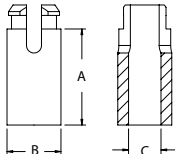
Stackable

## #4 Screw

Item No.		A		B		C		Bulk Pack Qty.
Standard	Stackable	In	mm	In	mm	In	mm	
SRS4-2-01	SSRS4-2-01	0.125	3.2	0.250	6.4	0.125	3.2	1000
CBSS010A	—	0.138	3.5	0.250	6.4	0.125	3.2	1000
CBSS015A	—	0.157	4.0	0.250	6.4	0.125	3.2	1000
CBSS020A	—	0.177	4.5	0.250	6.4	0.125	3.2	1000
SRS4-3-01	SSRS4-3-01	0.187	4.7	0.250	6.4	0.125	3.2	1000
SRS4-4-01	SSRS4-4-01	0.250	6.4	0.250	6.4	0.125	3.2	1000
SRS4-5-01	SSRS4-5-01	0.312	7.9	0.250	6.4	0.125	3.2	1000
SRS4-6-01	SSRS4-6-01	0.375	9.5	0.250	6.4	0.125	3.2	1000
SRS4-7-01	SSRS4-7-01	0.437	11.1	0.250	6.4	0.125	3.2	1000

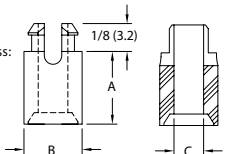
Item No.		A		B		C		Bulk Pack Qty.
Standard	Stackable	In	mm	In	mm	In	mm	
CBSS050A	—	0.472	12.0	0.250	6.4	0.125	3.2	1000
SRS4-8-01	SSRS4-8-01	0.500	12.7	0.250	6.4	0.125	3.2	1000
CBSS060A	—	0.559	14.2	0.250	6.4	0.125	3.2	1000
CBSS065A	—	0.591	15.0	0.250	6.4	0.125	3.2	1000
SRS4-10-01	SSRS4-10-01	0.625	15.9	0.250	6.4	0.125	3.2	1000
SRS4-12-01	SSRS4-12-01	0.750	19.1	0.250	6.4	0.125	3.2	1000
SRS4-14-01	SSRS4-14-01	0.875	22.2	0.250	6.4	0.125	3.2	1000
SRS4-16-01	SSRS4-16-01	1.000	25.4	0.250	6.4	0.125	3.2	1000

To Lock Hole:  
.234 (5.9)  
Panel Thickness:  
.062 (1.57)  
For #6 (M3) Screw



Standard

To Lock Hole:  
.234 (5.9)  
Panel Thickness:  
.062 (1.57)  
For #6 (M3) Screw



Stackable

## #6 Screw

Item No.		A		B		C		Bulk Pack Qty.
Standard	Stackable	In	mm	In	mm	In	mm	
SRS6-4-01	SSRS6-4-01	0.250	6.4	0.281	7.1	0.153	3.9	1000
SRS6-5-01	SSRS6-5-01	0.312	7.9	0.281	7.1	0.153	3.9	1000
SRS6-6-01	SSRS6-6-01	0.375	9.5	0.281	7.1	0.153	3.9	1000
SRS6-7-01	SSRS6-7-01	0.437	11.1	0.281	7.1	0.153	3.9	1000
SRS6-8-01	SSRS6-8-01	0.500	12.7	0.281	7.1	0.153	3.9	1000

Item No.		A		B		C		Bulk Pack Qty.
Standard	Stackable	In	mm	In	mm	In	mm	
SRS6-10-01	SSRS6-10-01	0.625	15.9	0.281	7.1	0.153	3.9	1000
SRS6-12-01	SSRS6-12-01	0.750	19.1	0.281	7.1	0.153	3.9	1000
SRS6-14-01	SSRS6-14-01	0.875	22.2	0.281	7.1	0.153	3.9	1000
SRS6-16-01	SSRS6-16-01	1.000	25.4	0.281	7.1	0.153	3.9	1000

To Lock Hole:  
.234 (5.9)  
Panel Thickness:  
.062 (1.57)  
For #8 (M4) Screw

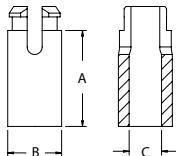


Fig. 1 Standard

To Lock Hole:  
.234 (5.9)  
Panel Thickness:  
.087 (2.2)  
For #8 (M4) Screw

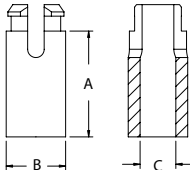
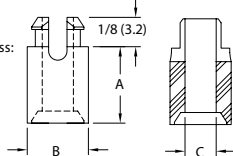


Fig. 2 Standard

To Lock Hole:  
.234 (5.9)  
Panel Thickness:  
.062 (1.57)  
For #8 (M4) Screw



Stackable

## #8 Screw

Item No.		A		B		C		Bulk Pack Qty.
Standard Fig.1	Standard Fig.2	In	mm	In	mm	In	mm	
CBSS105A	—	0.118	3.0	0.281	7.1	0.169	4.3	1000
CBSS110A	—	0.157	4.0	0.281	7.1	0.169	4.3	1000
CBSS115A	—	0.181	4.6	0.281	7.1	0.169	4.3	1000
CBSS120A	—	0.197	5.0	0.281	7.1	0.169	4.3	1000
SRS8-3-01	SSRS8-3-01	0.188	4.8	0.281	7.1	0.169	4.3	1000
SRS8-4-01	SSRS8-4-01	0.250	6.4	0.281	7.1	0.169	4.3	1000
SRS8-5-01	SSRS8-5-01	0.313	7.9	0.281	7.1	0.169	4.3	1000
SRS8-6-01	SSRS8-6-01	0.375	9.5	0.281	7.1	0.169	4.3	1000

Item No.		A		B		C		Bulk Pack Qty.
Standard Fig.1	Standard Fig.2	In	mm	In	mm	In	mm	
SRS8-7-01	SSRS8-7-01	0.438	11.1	0.281	7.1	0.169	4.3	1000
SRS8-8-01	SSRS8-8-01	0.500	12.7	0.281	7.1	0.169	4.3	1000
SRS8-10-01	SSRS8-10-01	0.625	15.9	0.281	7.1	0.169	4.3	1000
CBSS155A	—	0.669	17.0	0.281	7.1	0.169	4.3	1000
SRS8-12-01	SSRS8-12-01	0.750	19.1	0.281	7.1	0.169	4.3	1000
SRS8-14-01	SSRS8-14-01	0.875	22.2	0.281	7.1	0.169	4.3	1000
SRS8-16-01	SSRS8-16-01	1.000	25.4	0.281	7.1	0.169	4.3	1000
CBSS175A	—	1.181	30.0	0.281	7.1	0.169	4.3	1000